



South Street, Salisbury



A charming two bedroom Victorian terraced house in a fantastic and quiet location close to the train station and city centre.

The Property

This inviting family home benefits from an extension to create larger than average living accommodation.

The property opens into a welcoming hallway, leading to the comfortable sitting room and spacious dining room. The contemporary galley kitchen is well equipped with a good selection of floor and wall mounted unit, electric oven and gas hob, and space and plumbing for a washing machine and dishwasher.

Upstairs hosts two double bedrooms and the modern family shower room.

3 South Street, Salisbury, SP2 7SE

Rent
£1,325 PCM



Features

- Period charm
- Two receptions rooms
- Modern shower room
- Level walk to city centre
- Two double bedrooms
- Contemporary kitchen
- Close to Salisbury mainline station

Tenancy & Restrictions

To be let on an Assured Periodic Tenancy, with a 12 month protected period, rolling monthly with requirement for a two month tenants' notice. No smokers.

EPC Rating

C (69)

Outgoings

Council Tax: Wiltshire £2,468.97 (2026/27) Band C

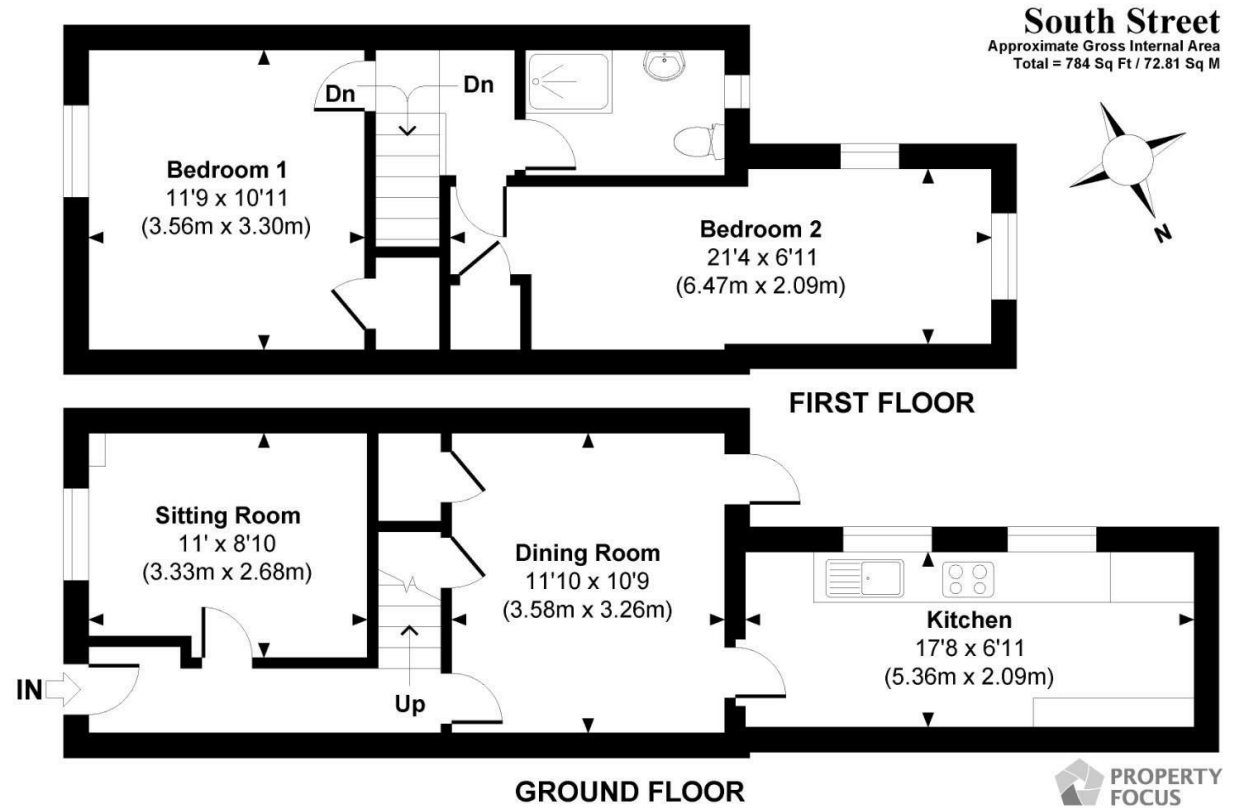
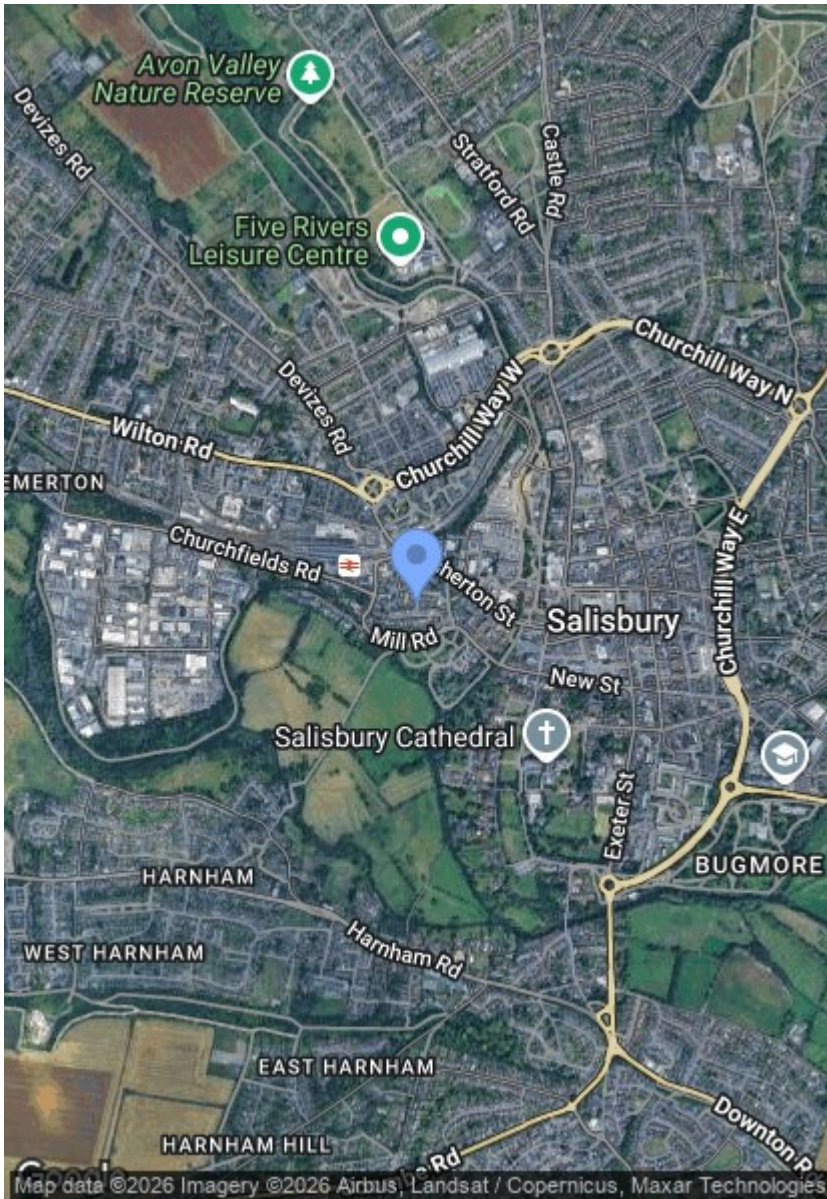
Size

781.00 sq ft

Location

South Street is a highly sought-after residential street in Salisbury, located within a short, level walk of the mainline station (with direct trains to London Waterloo, journey time approximately 90 minutes). The property is set moments from the green open spaces of Queen Elizabeth Gardens and the picturesque walks through Constables water meadows along the town path opposite. There is also level access to the city centre and the Cathedral Close making it easy to enjoy the range of educational, leisure, shopping and cultural facilities that Salisbury has to offer.





© www.propertyfocus.co | Professional Property Photography & Floorplans

This plan is for illustrative purposes only and is not to scale. If specified, the Gross Internal Area (GIA), dimensions, North point orientation and the size and placement of features are approximate and should not be relied on as a statement of fact. No guarantee is given for the GIA and no responsibility is taken for any error, omission or misrepresentation.

Disclaimer Notice Myddelton & Major and their clients give notice that:- i) they have no authority to make or give any representations or warranties in relation to the property, ii) these particulars do not form part of any offer or contract and must not be relied upon as statements or representations of fact. iii) any areas, measurements or distances are approximate. The text, photographs and plans are for guidance only and are not necessarily comprehensive. It should not be assumed that the property has all the necessary planning, Building Regulation or other consents, and any services, equipment or facilities have not been tested by the agent. iv) the purchaser must satisfy themselves by inspection or otherwise.