



161 Fisherton Street, Salisbury



A well presented, one bedroom fully furnished apartment with lift access, within walking distance of the train station and city centre.

The Property

The accommodation is presented in excellent order with high quality fittings and is tastefully and comprehensively furnished and equipped with everything required for comfortable modern living.

From the communal first floor landing, the front door opens into an open plan kitchen/living room. with two sofas, TV console table and side table, a dining table and 4 chairs. The kitchen area is equipped with all necessary appliances, kitchen ware, crockery, cutlery, utensils etc.

The bedroom is a good sized double with king size bed, bed-side tables, and a built in wardrobe. The bathroom is stylishly finished with a white suite including a shower over the bath, and limestone effect tiles.

Flat 7 161 Fisherton Street, Salisbury, SP2 7RP

Rent
£995 PCM



Features

- SINGLE OCCUPANCY ONLY
- Available for a 1 year period
- First floor apartment with lift access
- Fully & tastefully furnished
- Walking distance of train station and city centre
- Gas central heating
- Double glazed windows
- Gated community

Tenancy & Restrictions

To be let on an Assured Periodic Tenancy, with a 12 month protected period, rolling monthly with requirement for a two month tenants' notice. No smokers.

EPC Rating

B (82)

Outgoings

Council Tax: Wiltshire £2056.73 (2025/26) Band B

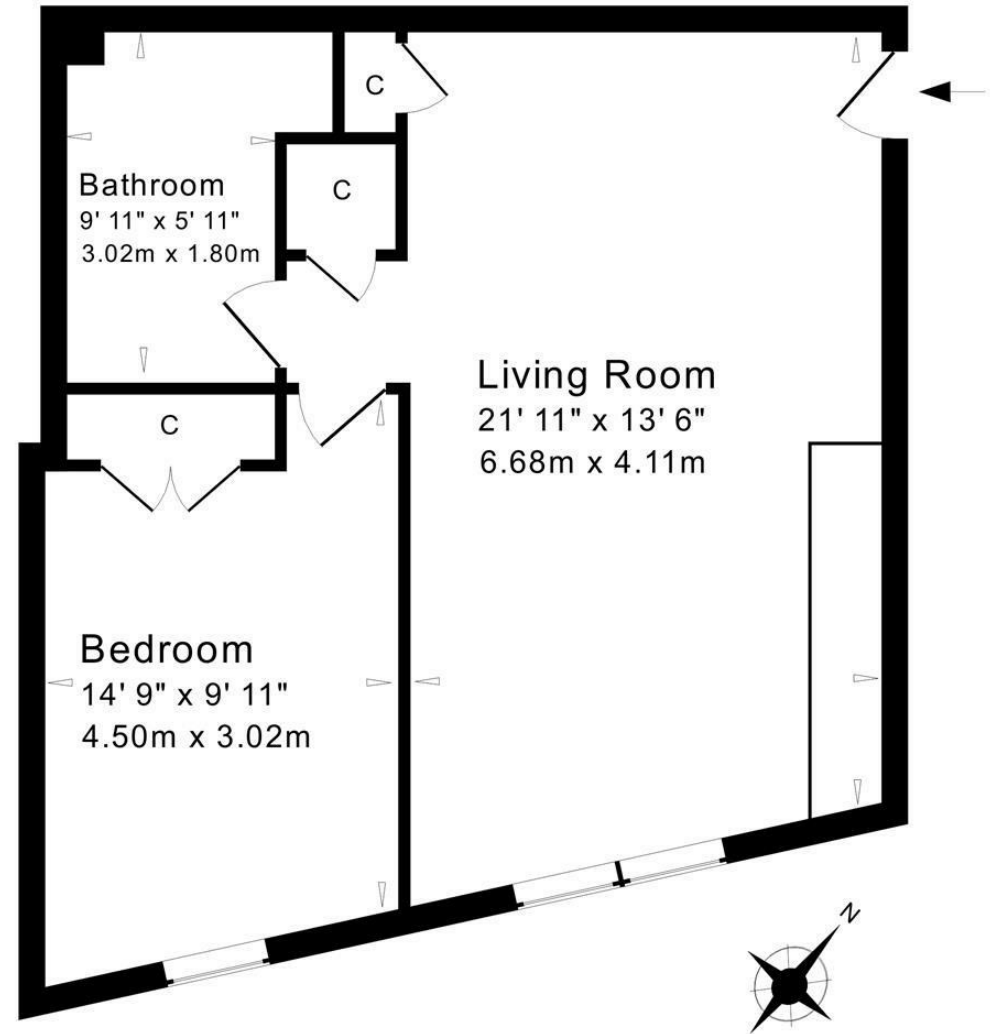
Size

580.00 sq ft

Location

Salisbury boasts a well thought of Playhouse and twice weekly charter market, with a plethora of restaurants, shopping, and leisure facilities. There is a number of primary and secondary schools, both private and state, including boys and girls grammar schools. The Close is home to and Salisbury Cathedral co-educational independent School and Bishop Wordsworth's C o E boys grammar school. Salisbury has excellent road links to London, Southampton and Bournemouth, and provides direct trains to London Waterloo from Salisbury mainline railway station (journey time approximately 90 minutes).





Approximate Gross Internal Floor Area 580 Sq. Ft./ 54 Sq. M

Measurements quoted are to IPMS: Residential 2
 For indicative purposes only. Copyright Jemesis Ltd 2018
 Drawing Number : 164-0048

Disclaimer Notice Myddelton & Major and their clients give notice that:- i) they have no authority to make or give any representations or warranties in relation to the property, ii) these particulars do not form part of any offer or contract and must not be relied upon as statements or representations of fact. iii) any areas, measurements or distances are approximate. The text, photographs and plans are for guidance only and are not necessarily comprehensive. It should not be assumed that the property has all the necessary planning, Building Regulation or other consents, and any services, equipment or facilities have not been tested by the agent. iv) the purchaser must satisfy themselves by inspection or otherwise.