



Exeter Street, Salisbury

An enchanting, double fronted, Grade II* Listed Freehold house, beautifully presented with a delightful, private rear garden, garage and good views of the Cathedral. Set in the heart of the historic cathedral city of Salisbury.





Description

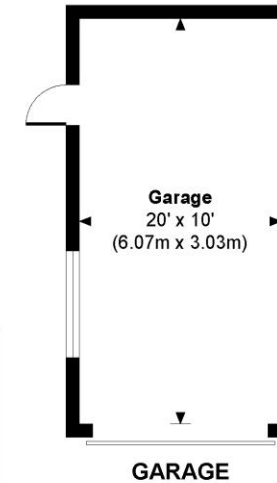
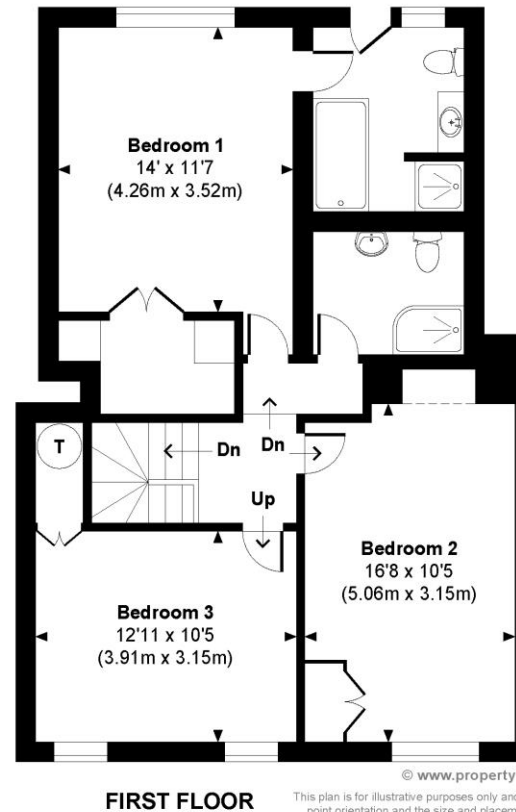
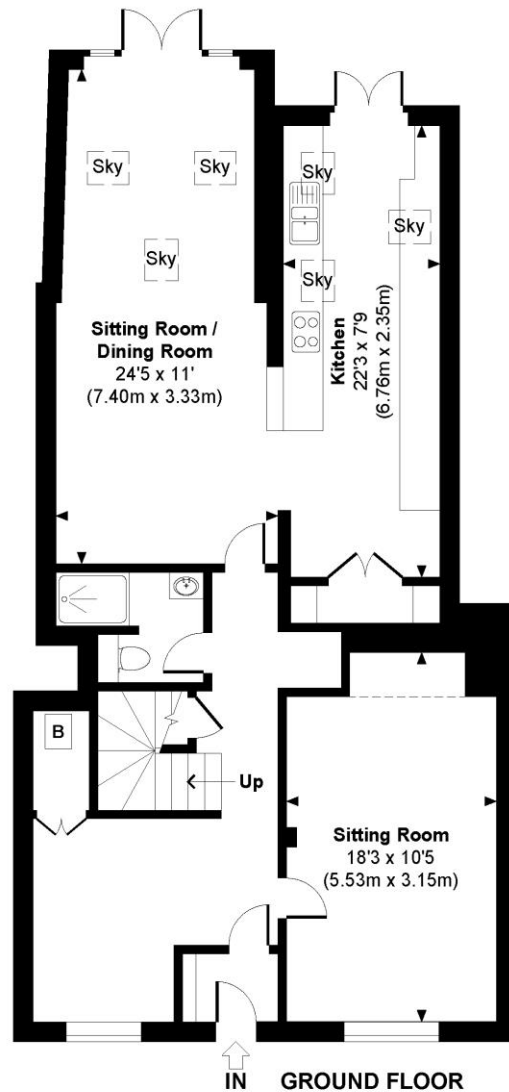
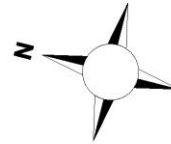
A very attractive double fronted classic red brick house in the city centre; Grade II* listed, it is described as being “of 16th Century origin, the early structure being masked by a symmetrical late 18th Century three bay façade”. Internally the house retains many appealing period details and the whole property has a comfortable atmosphere. Unusually for a city centre property it has both a large and private garden as well as a garage with off-street parking. From the front of the house there are some excellent views of Salisbury Cathedral.

Exeter Street is very much in the centre of the city and from the house it is a level walk to the excellent range of educational, leisure and shopping facilities available in Salisbury. There are a range of schools both private and state as well as two grammar schools; Bishops Wordsworth for boys and South Wilts for girls. Salisbury also has a mainline railway station with direct trains to London Waterloo, journey time about 90 minutes. Salisbury has excellent road links to London (A303), Southampton (A36) and Bournemouth (A338).



Exeter Street

Approximate Gross Internal Area
 Main House = 1685 Sq Ft / 156.51 Sq M
 Garage = 198 Sq Ft / 18.39 Sq M
 Total = 1883 Sq Ft / 174.90 Sq M
 Outbuildings are not shown in correct orientation or location.



© www.propertyfocus.co | Professional Property Photography & Floorplans

This plan is for illustrative purposes only and is not to scale. If specified, the Gross Internal Area (GIA), dimensions, North point orientation and the size and placement of features are approximate and should not be relied on as a statement of fact. No guarantee is given for the GIA and no responsibility is taken for any error, omission or misrepresentation.

49 High Street Salisbury Wiltshire SP1 2PD

01722 337575

www.myddeltonmajor.co.uk

Myddelton & Major for themselves and for the vendors or lessors of this property whose agents they are give notice that: – i) the particulars are set out as a general outline only for the guidance of intended purchasers or lessees, and do not constitute part of an offer or contract. ii) all descriptions, dimensions, reference to condition and necessary permissions for use and occupation, and other details are given without responsibility and any intending purchasers or tenants should not rely on them as statements or representations of fact, but must satisfy themselves by inspection or otherwise as to the correctness of each of them. iii) no person in the employment of Myddelton & Major has any authority to make or give any representation or warranty whatever in relation to this property.

