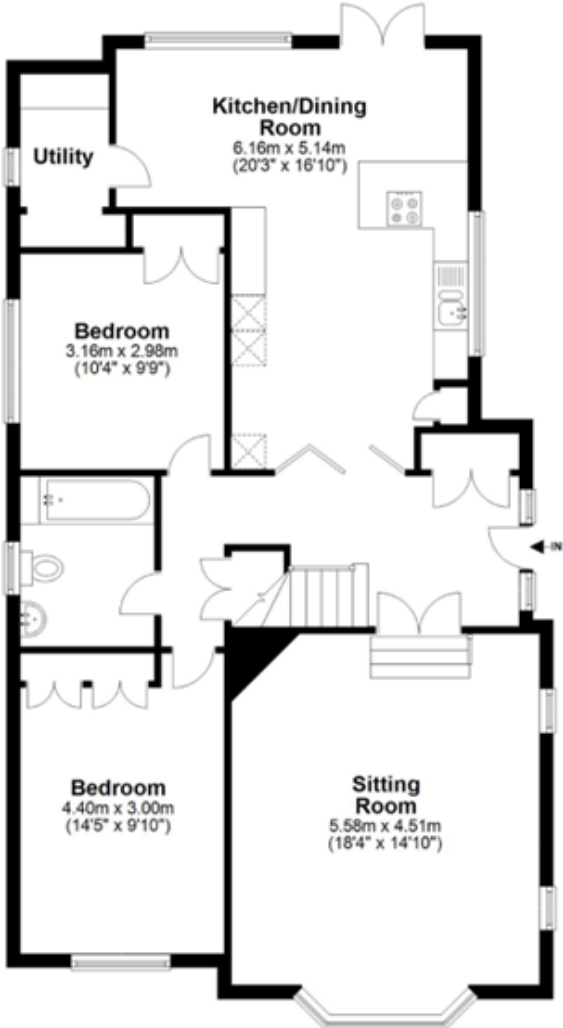
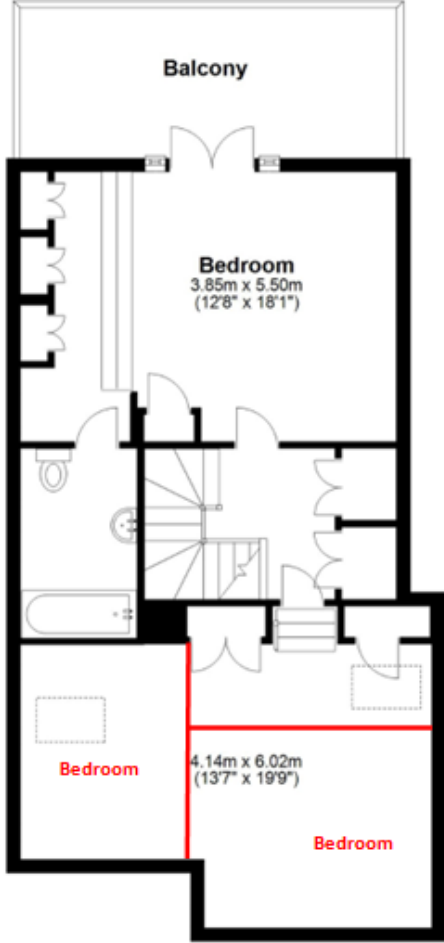


Proposed Floorplan - The Garden House

Ground Floor



First Floor



Total area: approx. 156.6 sq. metres (1686.1 sq. feet)

FOR EXCLUSIVE USE BY MYDDELTON MAJOR ESTATE AGENTS
 Plan for illustration only. Windows and doors are approximate. Whilst care is taken preparing this plan, please check details before making decisions reliant upon them. Measured and drawn to RICS guidelines
 COPYRIGHT CLEARPLANZ