



The Close, Salisbury

A splendid two bedroom ground floor flat with an attractive outlook, located in the highly coveted Cathedral Close.





Description

A smartly presented and naturally light home with some delightful, far reaching views over Medieval buildings, communal grounds and countryside beyond. Set on the ground floor with flexible accommodation, there are two bedrooms, a 16 ft sitting room, contemporary kitchen with space for a table and chairs, and a modern shower room.

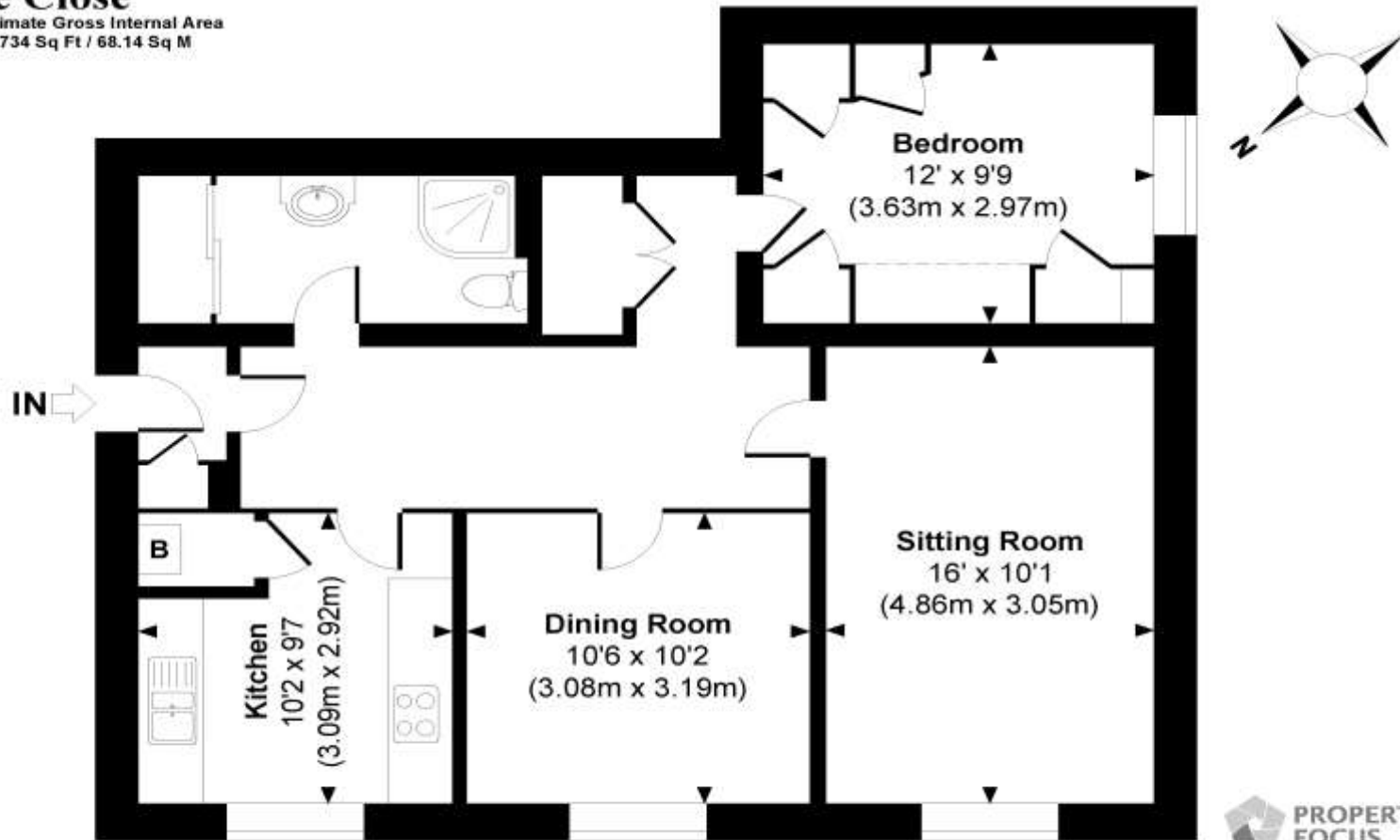
Situation

The development of Sarum St Michael is located in the heart of Salisbury's Cathedral Close which is an extremely attractive enclave in the city. The residents have the right to use the three acres of communal gardens which run down to the River Avon and have delightful views over the water meadows, beyond and back up towards the Cathedral spire. On site there is also residents parking, a bike store and the services of a daily caretaker. Salisbury supports an excellent range of shopping, education, leisure and cultural facilities, as well as a mainline station with trains to London Waterloo, journey time approximately 90 minutes.



The Close

Approximate Gross Internal Area
Total = 734 Sq Ft / 68.14 Sq M



GROUND FLOOR

© www.propertyfocus.co.uk | Professional Property Photography & Floorplans
This plan is for illustrative purposes only and is not to scale. If specified, the Gross Internal Area (GIA), dimensions, floor
level orientation and the size and placement of features are appropriate and should not be relied on as a statement of
fact. No guarantee is given for the GIA and no responsibility is taken for any error, omission or misrepresentation.

49 High Street Salisbury Wiltshire SP1 2PD

01722 337575

www.myddeltonmajor.co.uk

Myddelton & Major for themselves and for the vendors or lessors of this property whose agents they are give notice that: – i) the particulars are set out as a general outline only for the guidance of intended purchasers or lessees, and do not constitute part of an offer or contract. ii) all descriptions, dimensions, reference to condition and necessary permissions for use and occupation, and other details are given without responsibility and any intending purchasers or tenants should not rely on them as statements or representations of fact, but must satisfy themselves by inspection or otherwise as to the correctness of each of them. iii) no person in the employment of Myddelton & Major has any authority to make or give any representation or warranty whatever in relation to this property.

OnTheMarket.com

